

SITE SYMBOLS /LEGEND

- (S) STOP SIGN, R1-1, 36"X36"
(RO) RIGHT TURN ONLY, R3-5R, 24" X 30"
(OW) ONE-WAY, R6-1R, 36"X12"
→ PROPOSED SOLID DIRECTIONAL ARROW

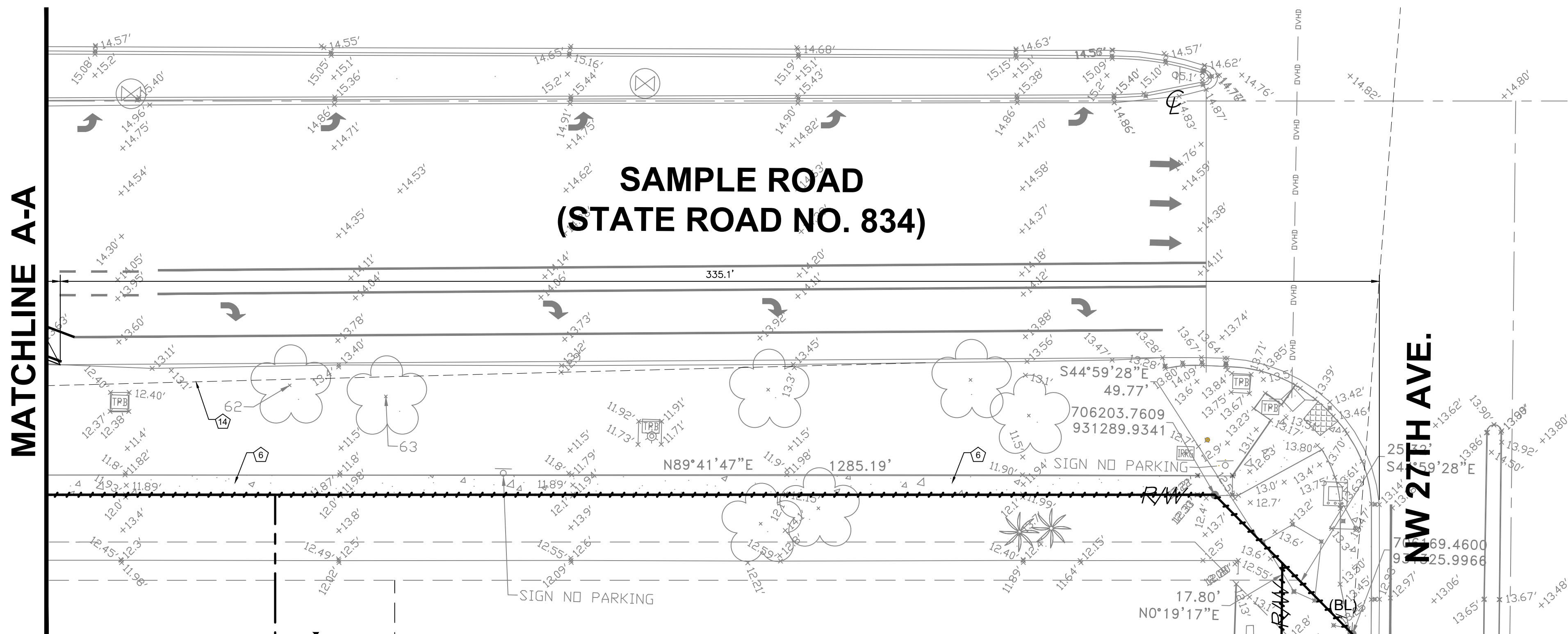
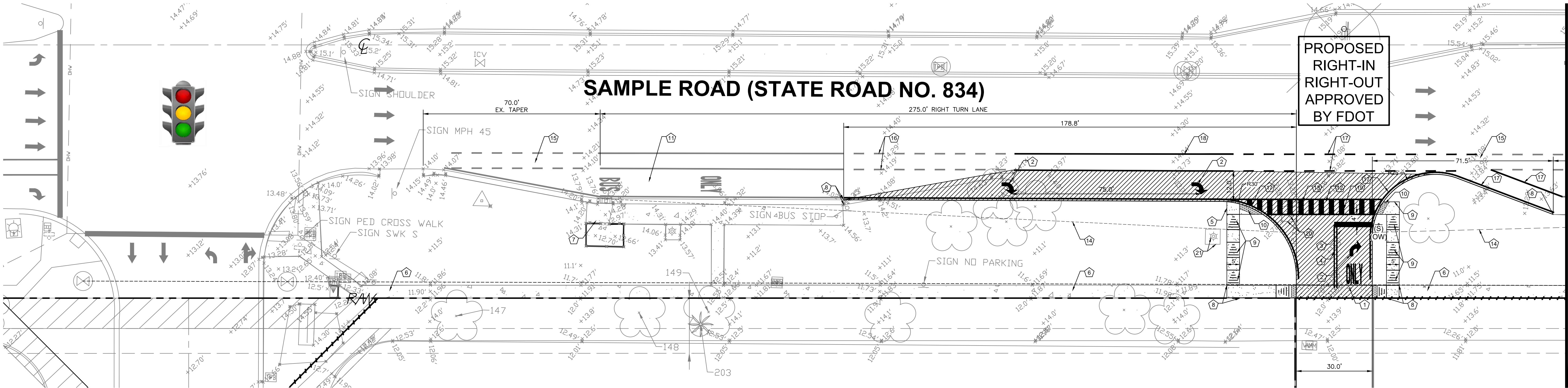
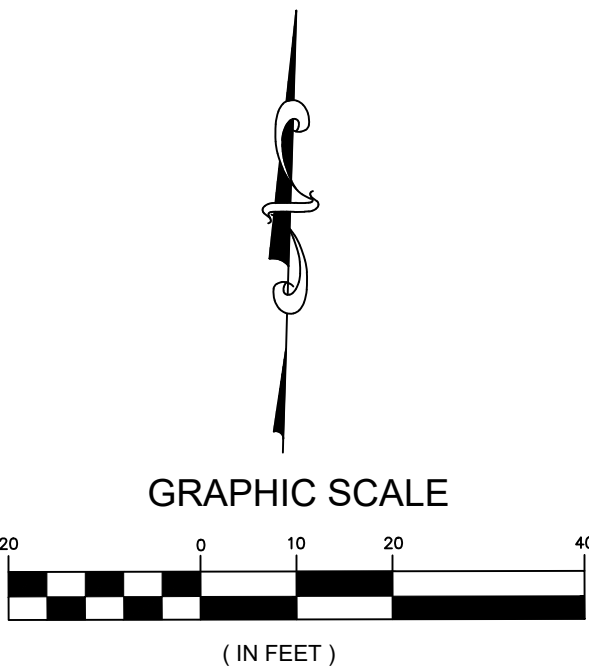
HATCH LEGEND

- PROPOSED CONCRETE SIDEWALK
PROPOSED NEW PAVEMENT, CONTRACTOR SHALL MATCH EXISTING PAVEMENT PER FDOT STANDARDS SPECIFICATIONS

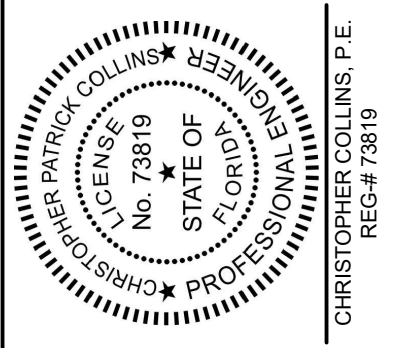
KEYNOTE LEGEND

- 1 PROP. PAVEMENT MARKING PER FDOT 2022-23 INDEX 711-001
2 PROP. WHITE DIRECTIONAL TRAFFIC ARROWS PER FDOT 2022-23 INDEX 711-001
3 PROP. STOP-BAR PER FDOT 2022-23 INDEX 711-001
4 PROP. 6" DOUBLE YELLOW STRIPING PER FDOT 2022-23 INDEX 711-001
5 PROP. 6" THICK CONCRETE SIDEWALK
6 EXIST. 6" THICK CONCRETE SIDEWALK
7 EXIST. BUS STOP
8 MATCH EXISTING LINE AND GRADE
9 PROP. HANDICAP RAMP TYPE CR-G, PER FDOT 2022-23 INDEX 522-002, 4 OF 7
10 PROP. DETECTABLE WARNING PER FDOT 2022-23 INDEX 522-002, 6 OF 7
11 EXIST. "BUS ONLY" LANE
12 PROP. DRIVEWAY PER FDOT DESIGN MANUAL 2021 CHAPTER 214.1
13 PROP. MAINTENANCE OF TRAFFIC PER FDOT INDEX 102-613, 102-615, 102-660
14 PROP. SAFE SIGHT TRIANGLE PER FDOT DESIGN MANUAL 2021 CHAPTER 212.11, EXHIBIT 212.6
15 EXIST. 6' WIDE BICYCLE LANE
16 EXIST. 2'-4" 6" WHITE SKIPS PER BROWARD COUNTY DETAIL (SEE SHEET C-11.1)
17 PROP. 2'-4" 6" WHITE SKIPS PER BROWARD COUNTY DETAIL (SEE SHEET C-11.1)
18 PROP. 6" WHITE SOLID STRIPING
19 PROP. CROSSWALK STRIPING PER FDOT 2022-23 INDEX 711-001, 9 OF 13
20 EXIST. LIGHT POLE AND CONCRETE PAD (TO BE RELOCATED)
21 PROP. LIGHT POLE AND CONCRETE PAD

B.C.H.C.E.D. REF. NO. 200617002



666 N.E. 125th STREET,
SUITE 247
NORTH MIAMI, FL 33161
Phone: 305.720.2079
C.O.A. 33221



This item has been digitally signed and sealed by Christopher P. Collins, P.E. on the date adjacent to the seal.

Printed copies of this document are not considered signed and sealed and the signature must be verified on any electronic copies.

MATCHLINE A-A

Revision	Date	Comment

Designed by:	C.P.C.
Drawn by:	A.T.S.
Checked by:	C.P.C.
Approved by:	C.P.C.
Scale:	1" = 20'
Date:	05/25/2022
Job No.:	I002

Plans for
FESTIVAL MARKETPLACE
2900 W SAMPLE ROAD
POMPANO BEACH,
FLORIDA

DRIVEWAY BLOW UP PLAN

Sheet No.
C-7.1

Sunshine811
Call 811 or visit sunshine811.com two full business days before digging to have buried facilities located and marked.
Check positive response codes before you dig!